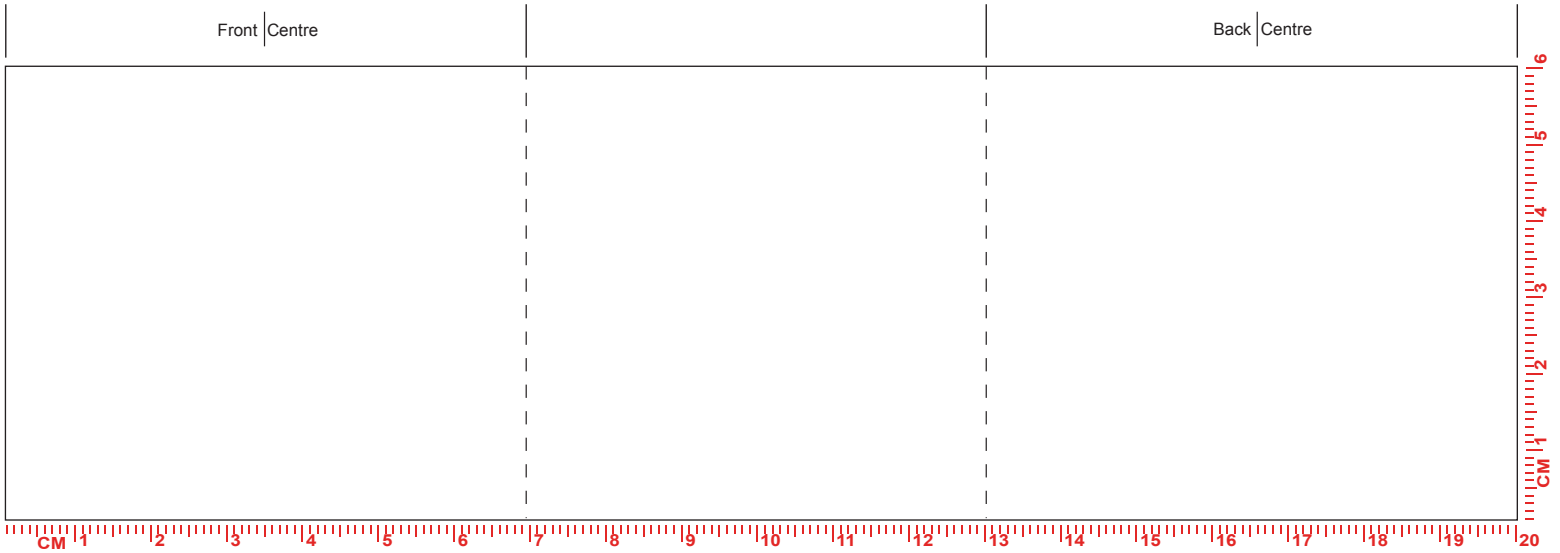
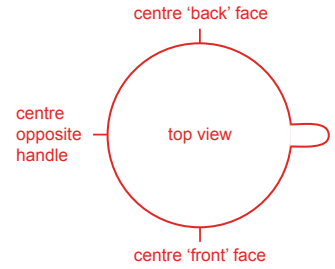


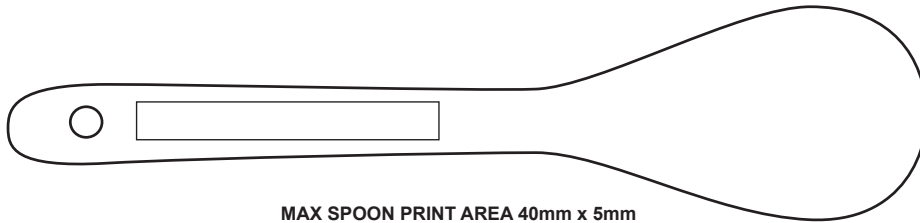
MUG & SPOON

Design Name	XXXXXX	Print Colours	XXXXXXXXXX
Product Colour	XXXXXX		XXXXXXXXXX
Print Process	Litho	No. of Colours	XXXXXXXXXX
Artwork Position	Front and back	Repeat Order	

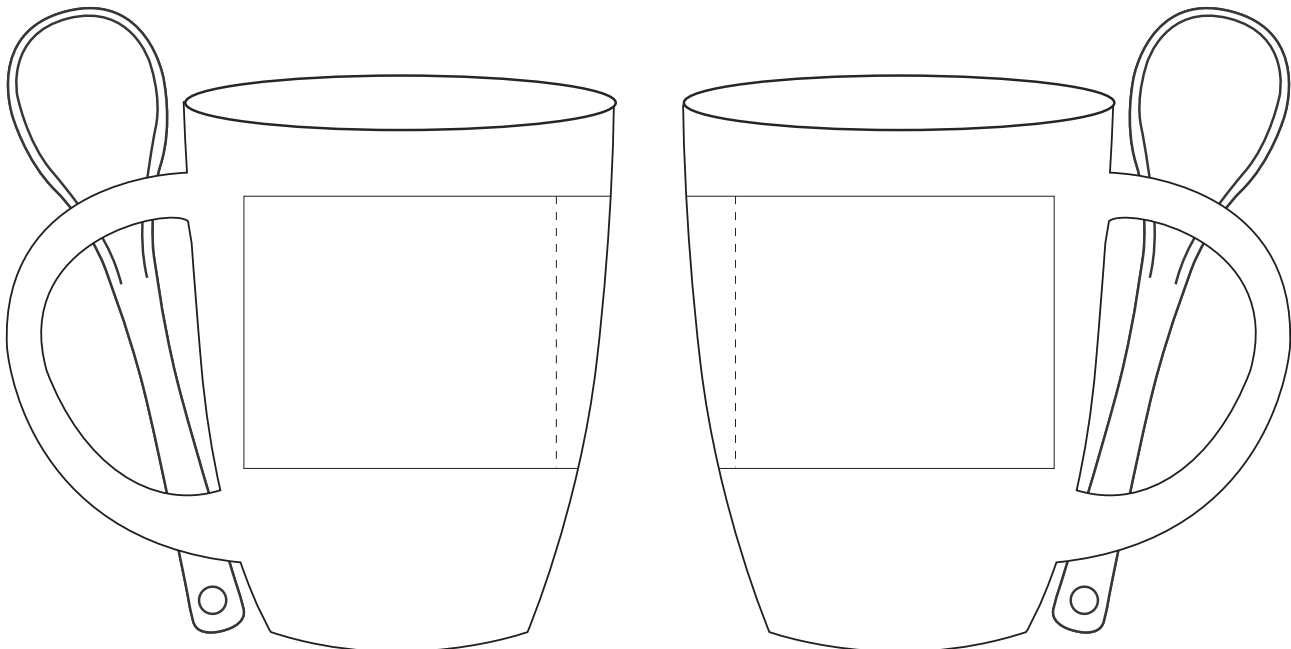
Back Stamp		Print Position	XXXXXXXXXX
Inside Base Print		Print Colours	XXXXXXXXXX
Inner Rim		No. of Colours	XXXXXXXXXX
Handle Flash		Additional Notes	
Gilding			



TO SCALE / MAX LITHO PRINT AREA 200mm x 60mm



MAX SPOON PRINT AREA 40mm x 5mm



Mug has been scaled down to 70%

Please note, that the mug illustration on the lower part, is a rough guideline outlining the position of the design on the mug, and may not be to scale. The colour of the actual product is as per the order details in the top left hand corner of the PDF, the colour of the print shown is a representation only, as colours can display differently on different software and monitors. We reserve the right to make appropriate extra charges for multiple or continual changes/modifications to artwork which result in us incurring further costs for films/screens etc. If you are to print this PDF please remember to print to 100% scale (and NOT 'print to fit') to ensure accurate artwork size.