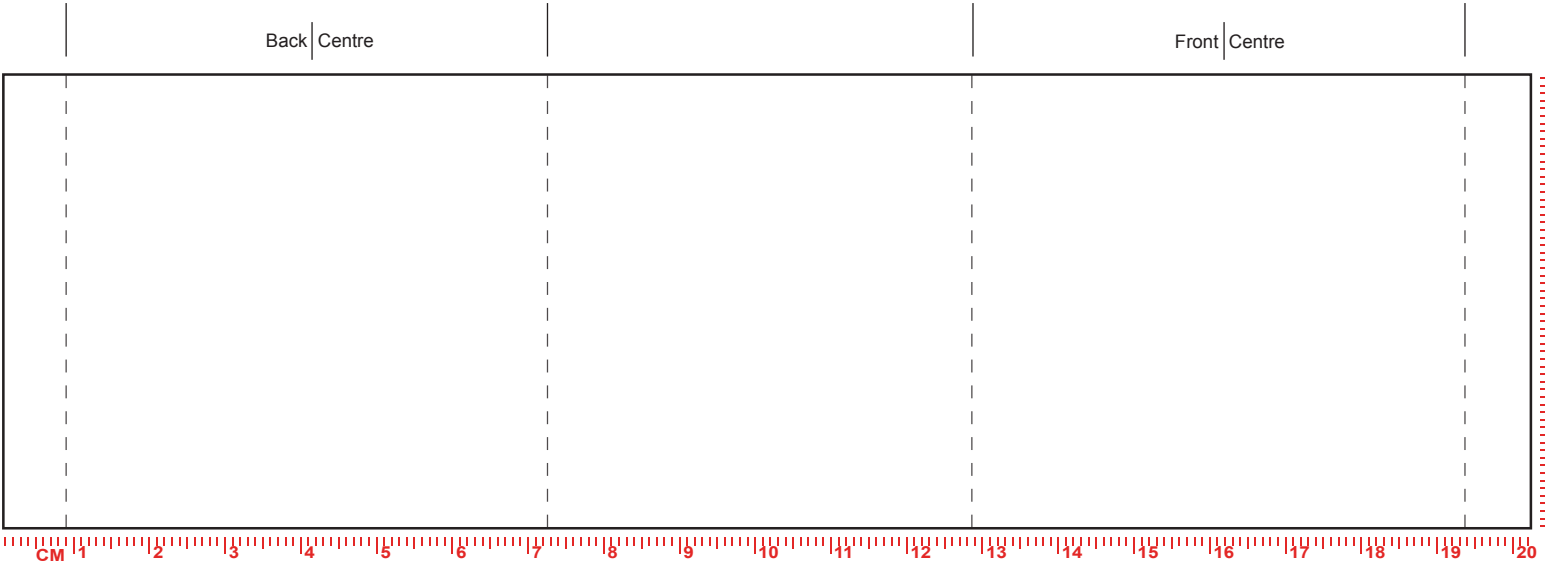
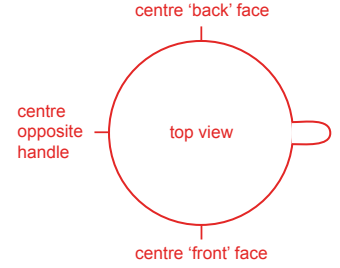


SPARTA

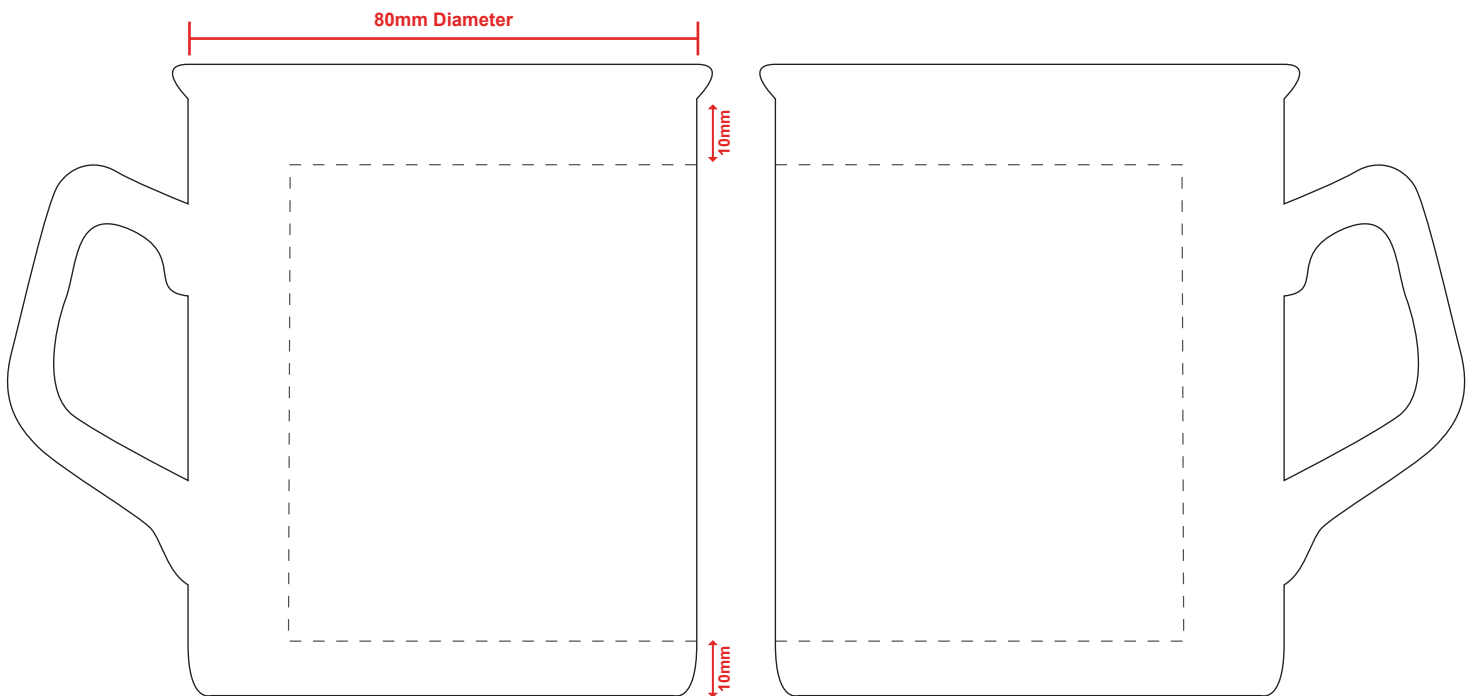
Design Name	XXXXX	Print Colours	XXXXXXXXXX
Product Colour	XXXXX		XXXXXXXXXX
Print Process	Dye Sub	No. of Colours	XXXXXXXXXX
Artwork Position	Front and back	Repeat Order	

Back Stamp	Print Position	XXXXXXXXXX
Inside Base Print	Print Colours	XXXXXXXXXX
Inner Rim	No. of Colours	XXXXXXXXXX
Handle Flash	Additional	
Gilding	Notes	



To scale / max dye sub print area 202mm x 60mm

PLEASE BE AWARE THAT SMALL TEXT AND LOGOS MAY FILL IN WHEN SUBLIMATED ONTO THE MUG



Mug has been scaled down to 90%

Please note, that the mug illustration on the lower part, is a rough guideline outlining the position of the design on the mug, and may not be to scale. The colour of the actual product is as per the order details in the top left hand corner of the PDF, the colour of the print shown is a representation only, as colours can display differently on different software and monitors. We reserve the right to make appropriate extra charges for multiple or continual changes/modifications to artwork which result in us incurring further costs for films/screens etc. If you are to print this PDF please remember to print to 100% scale (and NOT 'print to fit') to ensure accurate artwork size.