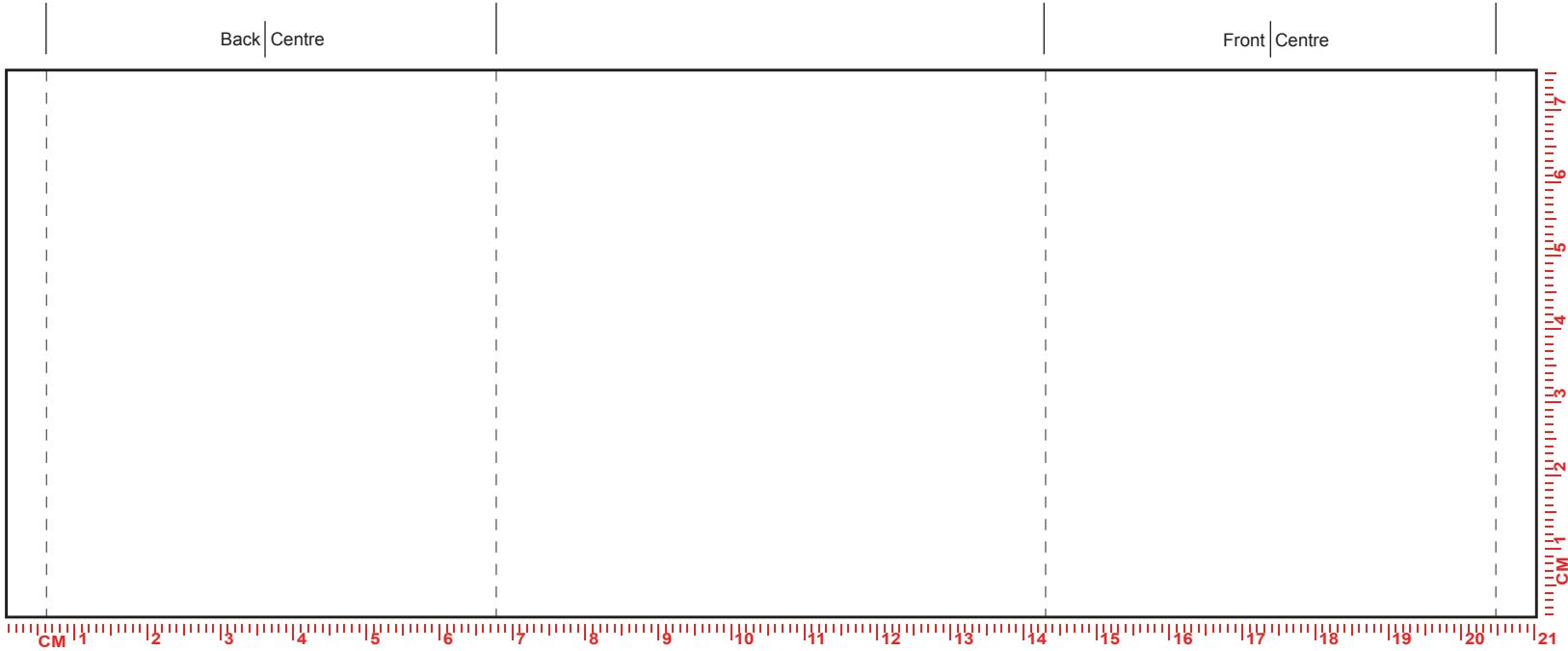
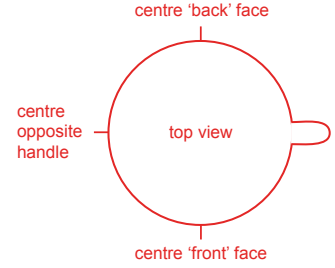


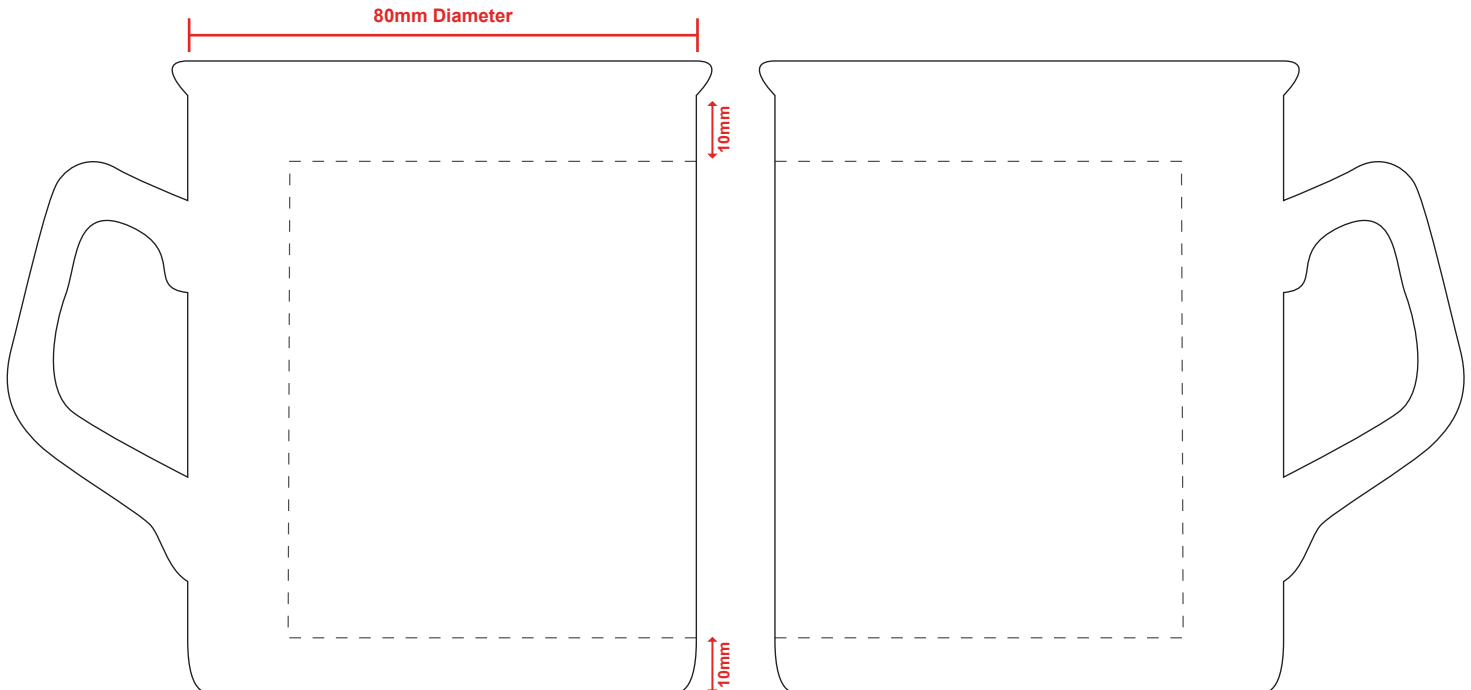
**SPARTA**

|                         |                |                       |            |
|-------------------------|----------------|-----------------------|------------|
| <b>Design Name</b>      | XXXXX          | <b>Print Colours</b>  | XXXXXXXXXX |
| <b>Product Colour</b>   | XXXXX          |                       | XXXXXXXXXX |
| <b>Print Process</b>    | Litho          | <b>No. of Colours</b> | XXXXXXXXXX |
| <b>Artwork Position</b> | Front and back | <b>Repeat Order</b>   |            |

|                          |                       |            |
|--------------------------|-----------------------|------------|
| <b>Back Stamp</b>        | <b>Print Position</b> | XXXXXXXXXX |
| <b>Inside Base Print</b> | <b>Print Colours</b>  | XXXXXXXXXX |
| <b>Inner Rim</b>         | <b>No. of Colours</b> | XXXXXXXXXX |
| <b>Handle Flash</b>      | <b>Additional</b>     |            |
| <b>Gilding</b>           | <b>Notes</b>          |            |



MAX LITHO PRINT AREA 210mm x 75mm



Mug has been scaled down to 90%

Please note, that the mug illustration on the lower part, is a rough guideline outlining the position of the design on the mug, and may not be to scale. The colour of the actual product is as per the order details in the top left hand corner of the PDF, the colour of the print shown is a representation only, as colours can display differently on different software and monitors. We reserve the right to make appropriate extra charges for multiple or continual changes/modifications to artwork which result in us incurring further costs for films/screens etc. If you are to print this PDF please remember to print to 100% scale (and NOT 'print to fit') to ensure accurate artwork size.